

TECHNOLOGIES

SHAPE

NEW ERGONOMY



Perfect balance between support zone and relief zone. The "big hole" helps maintain comfort under pressure and offers day long support and comfort: the central relief zone is long enough to work in all riding positions but a structural stability bridge prevents unwanted flex and twist.

COVER

PROTEK



"Protection" technology to increase the resistance of the product and its capacity to withstand to wear and tear. Silicone supports integrated in the cover and distributed in the most subject to wear area. They also increase its control skills in the driven out of the saddle riding.

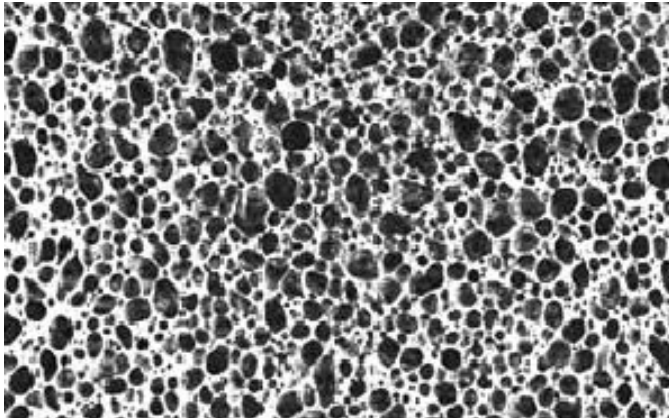
MICROFEEL



Breathable and hard wearing cover. It is lighter than traditional materials and less deformable. Anti-skid effect with an extraordinary grip on the saddle. Biocompatible material.

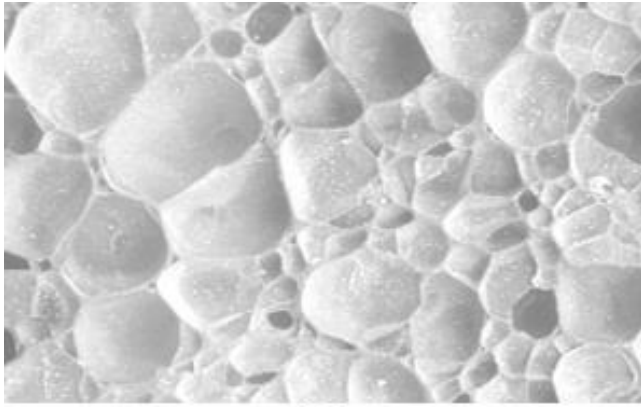
PADDING

BIOFOAM



Biodynamic structure that follows the movements of the pelvis during pedalling, guarantees comfort, reduced weight, lasting resistance and ideal support. The “closed cells” surface assures the water repellency of the padding.

PEBAX



Innovative material for the padding with extraordinary technological benefits such as the ultra light weight. Biocompatible with an outstanding shape memory. Its features allow the saddle to be lighter and more comfortable.

SHELL

FULL CARBON



Unidirectional high modulus Carbon fiber associated with an engineering study about the shape and structure, which assure lightness without compromise. The synthesis of experience, multi-year research and superb craftsmanship.

CARBON FIBER REINFORCED



Nylon with high properties, enriched with a high proportion of long carbon fibre, in order to reinforce the characteristics of rigidity, stiffness and durability without compromising the weight.

RAIL

DNA CARBON



The crossing X shape knot (Dynamic Node Action) enables to increase the rigidity of the rail and also contain the weight, avoiding useless spin and torsion, without compromise the comfort. A length greater than traditional carbon rails that you can find on the market, allows one of the best forward and backward adjustments of the saddle.

XSILITE



It is a material with a high percentage of silicon with particles of titanium and carbon. Light and strong, it turns out to be resistant to all weather conditions. The process through the stealth technology ensures a better strenght against fatigue stress.

MANGANESE



This material increases the characteristics of the frame by improving its resistance to wear caused by shocks.